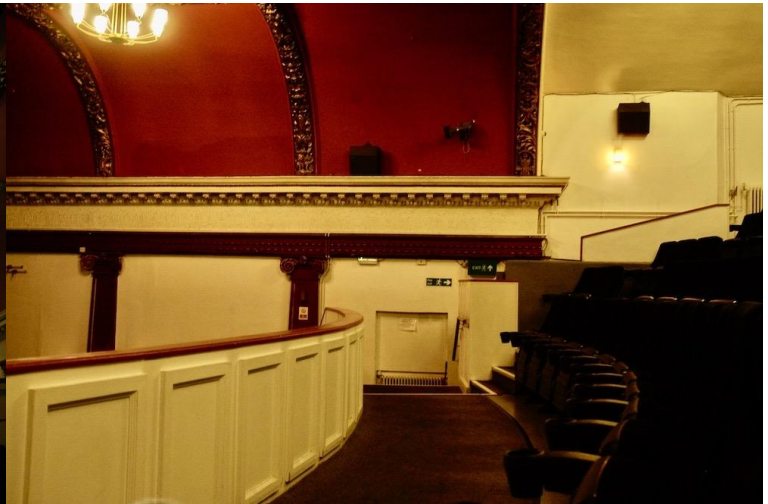


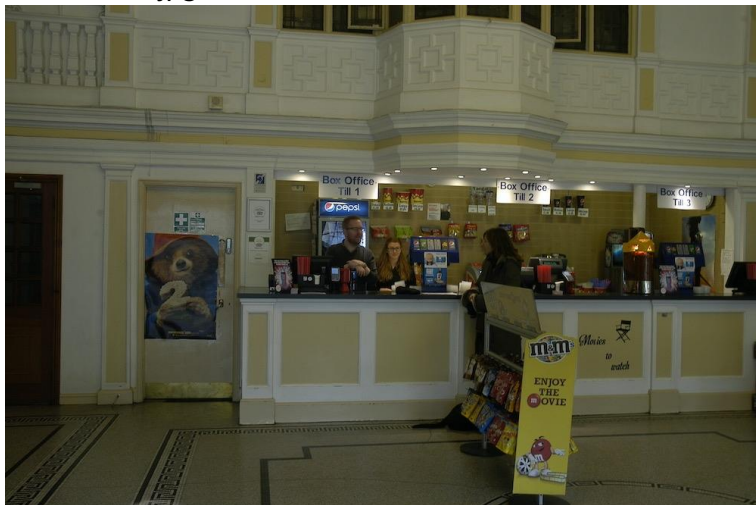
Location:	07303	Distance from London W1 (miles):	104.00
A beautifully preserved 1920s cinema with classic Art Deco architecture, rich red velvet interiors, and an old-world charm.		Parking:	
		Access:	
		Availability:	
		Power:	
		Noise:	
		Area:	



07303-008.jpg



07303-009.jpg



07303-018.jpg



07303-019.jpg



07303-002.jpg



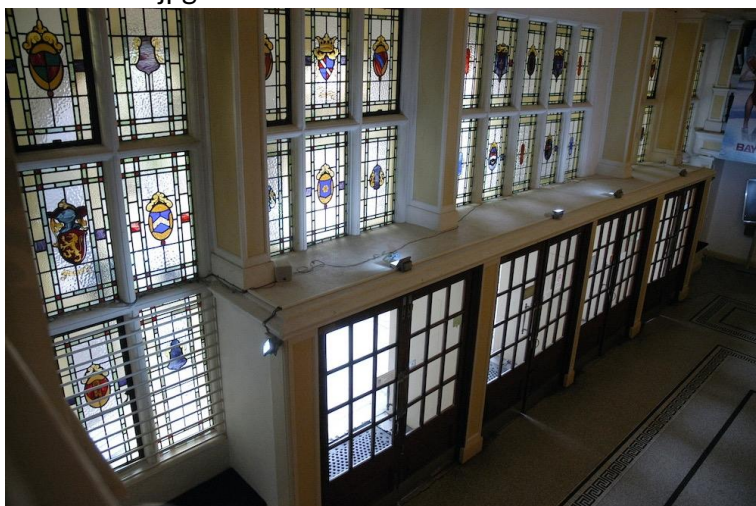
07303-003.jpg



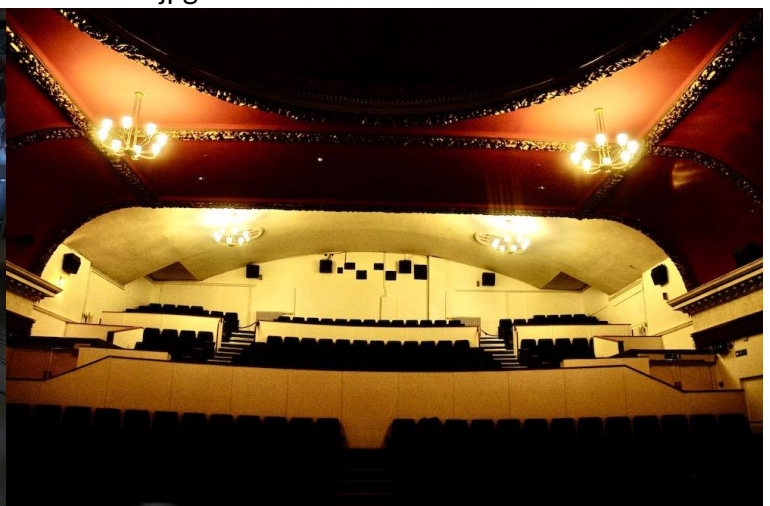
07303-001.jpg



07303-006.jpg



07303-012.jpg



07303-007.jpg



07303-013.jpg



07303-004.jpg



07303-010.jpg



07303-005.jpg



07303-028.jpg



07303-011.jpg



07303-029.jpg



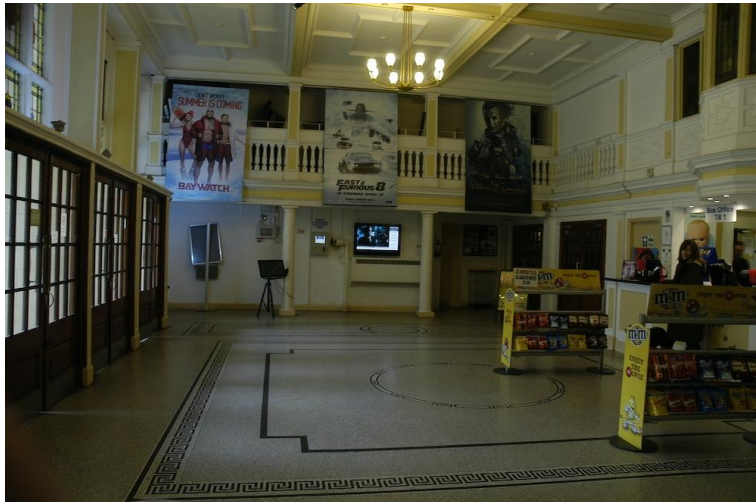
07303-016.jpg



07303-017.jpg



07303-014.jpg



07303-015.jpg



07303-022.jpg



07303-023.jpg



07303-020.jpg



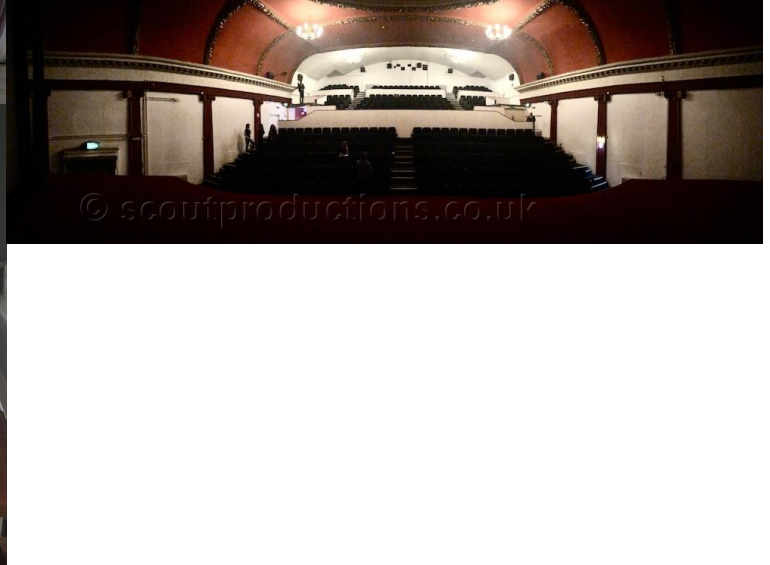
07303-021.jpg



07303-026.jpg



07303-032.jpg



07303-027.jpg



07303-033.jpg



07303-024.jpg



07303-030.jpg



07303-025.jpg



07303-031.jpg



07303-034.jpg