

Location:	07106	Distance from London W1 (miles):	7.10
Marble lobby atrium area with a fantastic bar / cafe which is also available at the moment and it has the revolving door - it is possible to film here during the week though it can be noisy - fridays and weekends are better.	Parking:	offloading only	
	Access:	good	
	Availability:	possible in mid week but hours are limited	
	Power:		
	Noise:	people noise	
	Area:		



07106-030.jpg



07106-029.jpg



07106-028.jpg



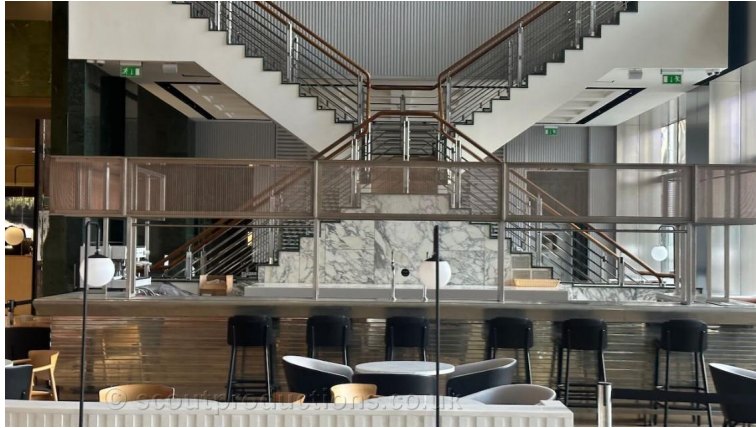
07106-003.jpg



07106-017.jpg



07106-016.jpg



07106-015.jpg



07106-013.jpg



07106-012.jpg



07106-027.jpg



07106-026.jpg



07106-025.jpg



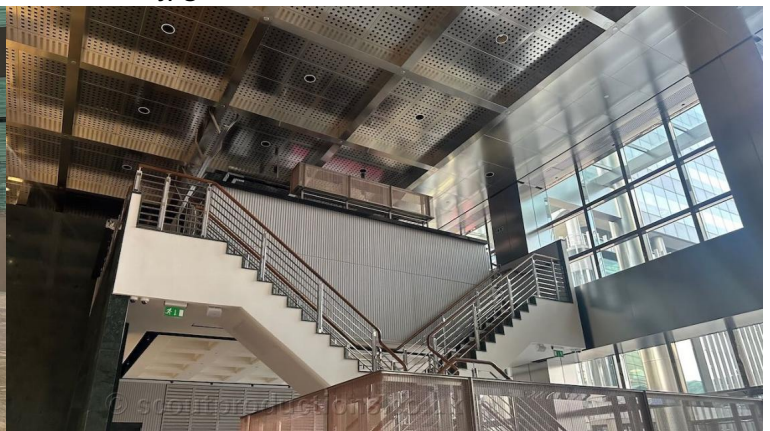
07106-024.jpg



07106-023.jpg



07106-022.jpg



07106-019.jpg



07106-021.jpg



07106-018.jpg