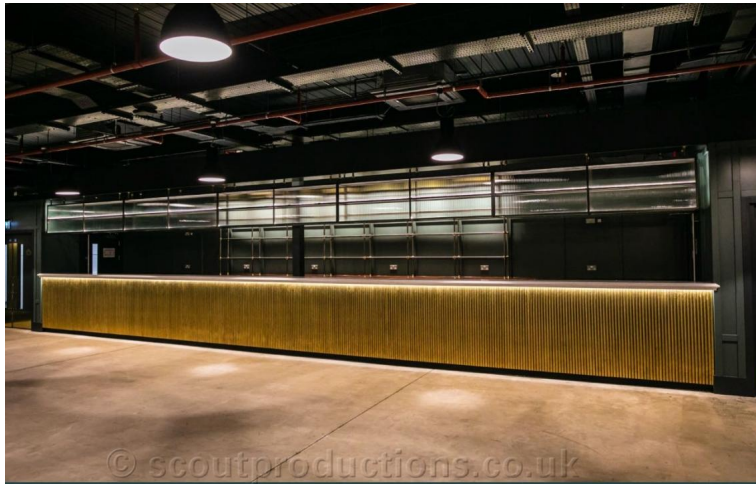
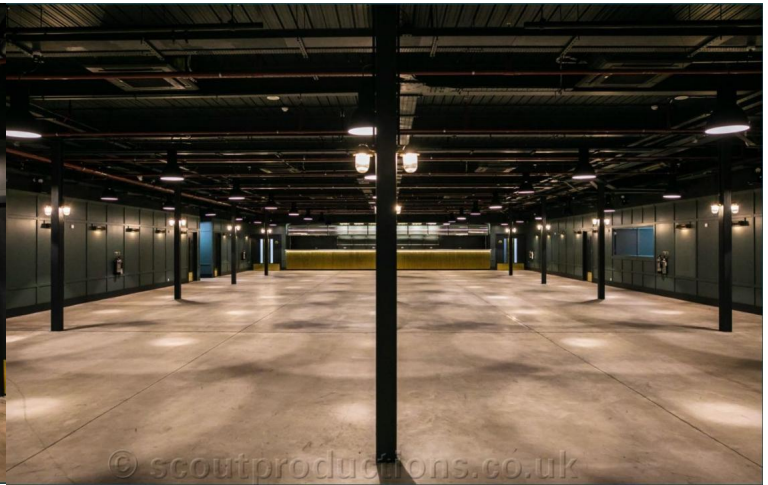


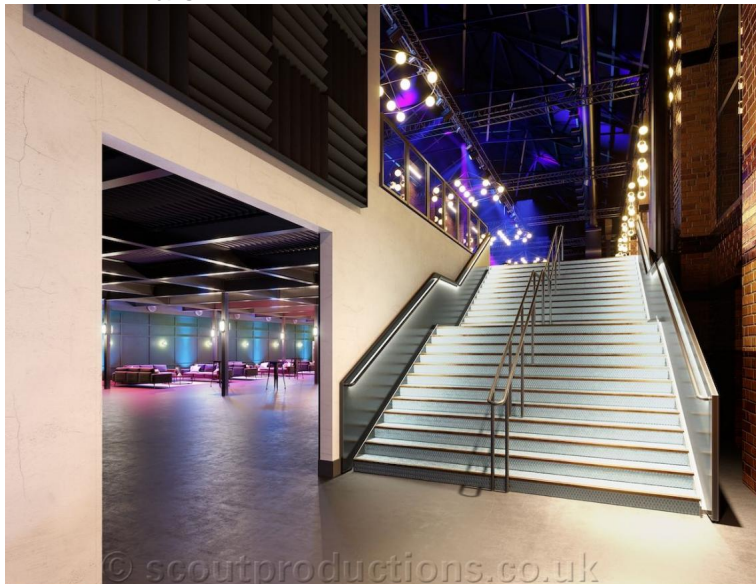
Location:	04667	Distance from London W1 (miles):	5.30
Under development till Early March Refresh for a wonderful location very popular with promos back in the 1990's and now reopened as a massive new two tier venue		Parking:	not great - loading bay
		Access:	
		Availability:	Summer 2022
		Power:	plenty
		Noise:	
		Area:	



04667-005.jpg



04667-004.jpg





04667-003.jpg



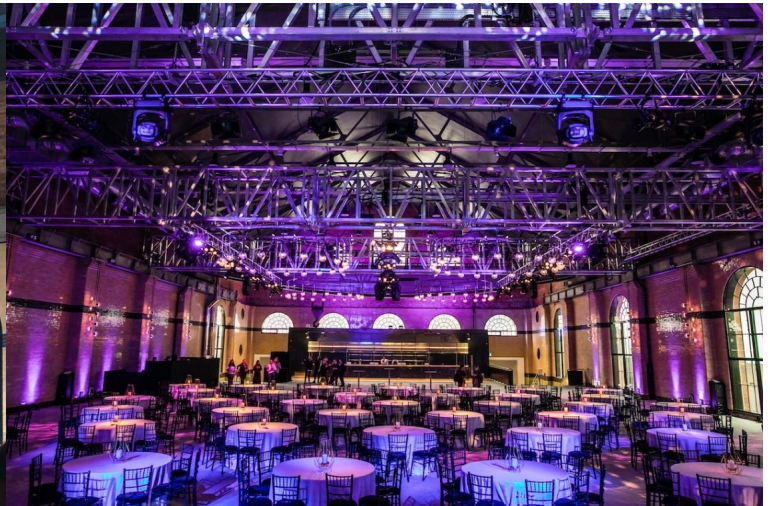
04667-017.jpg



04667-002.jpg



04667-016.jpg



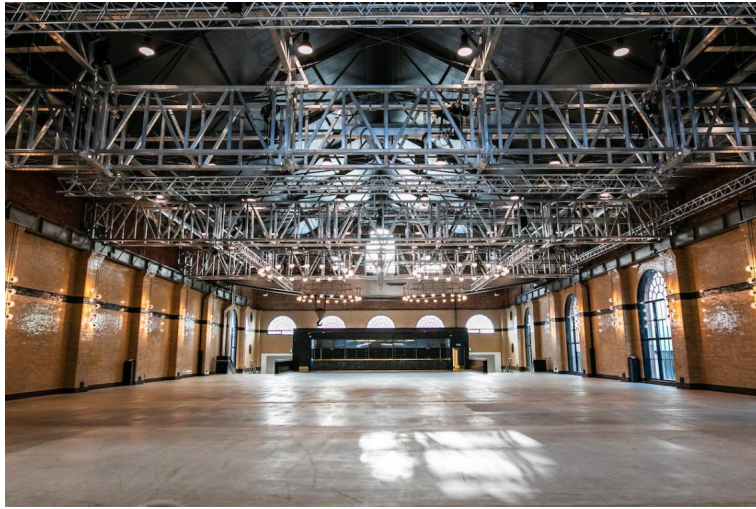
04667-001.jpg



04667-015.jpg







04667-014.jpg



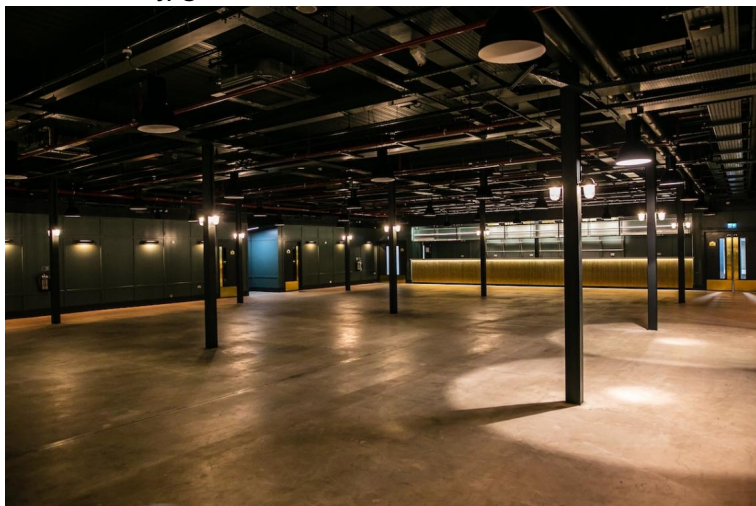
04667-013.jpg



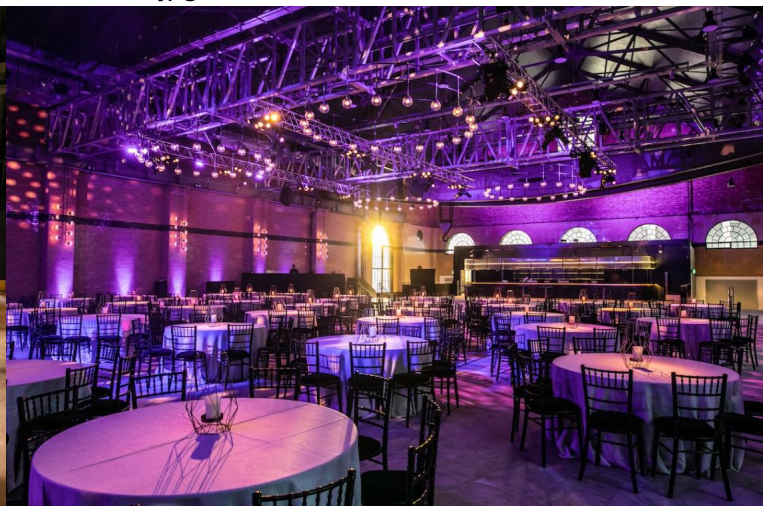
04667-027.jpg



04667-012.jpg

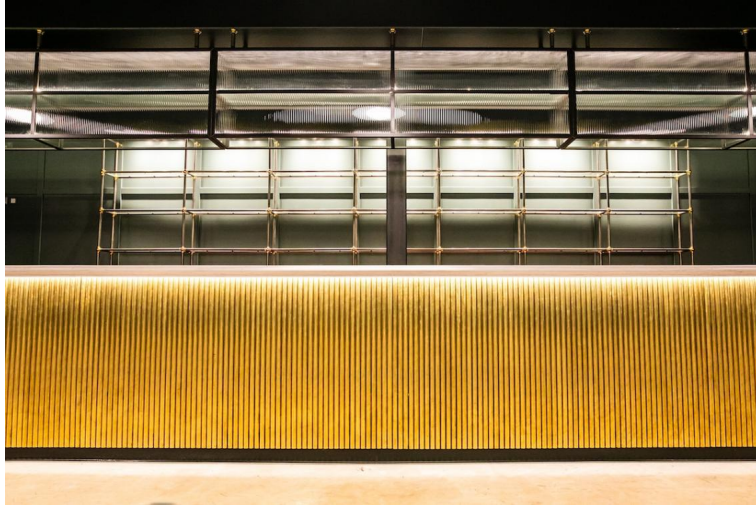


04667-026.jpg



04667-011.jpg





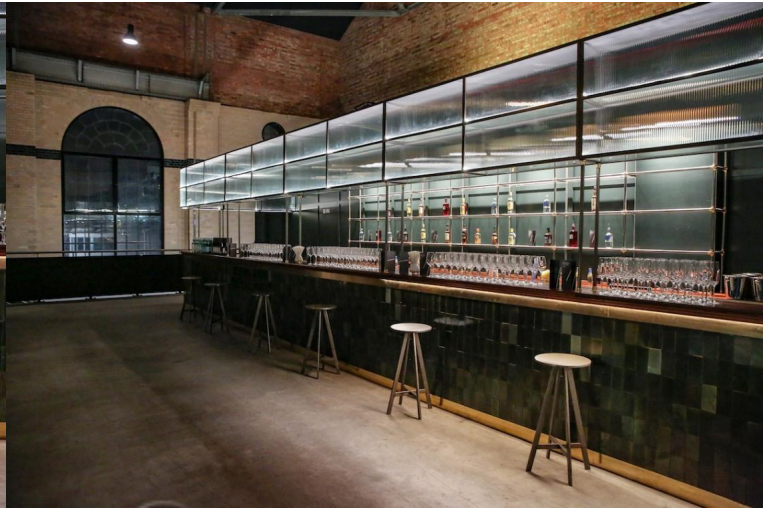
04667-025.jpg



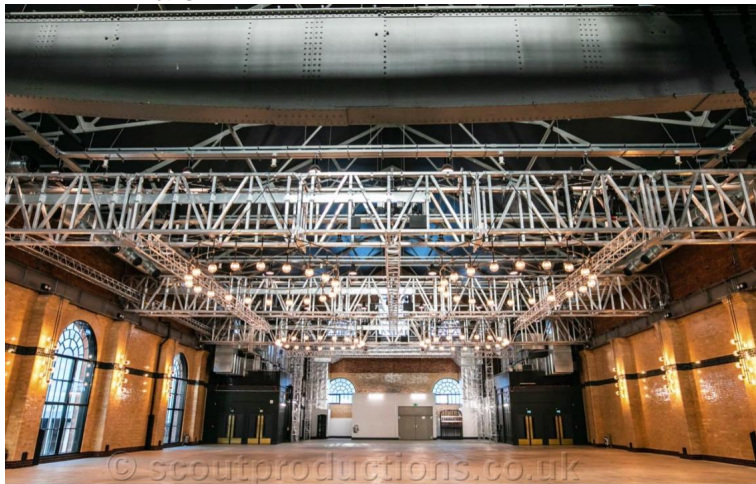
04667-010.jpg



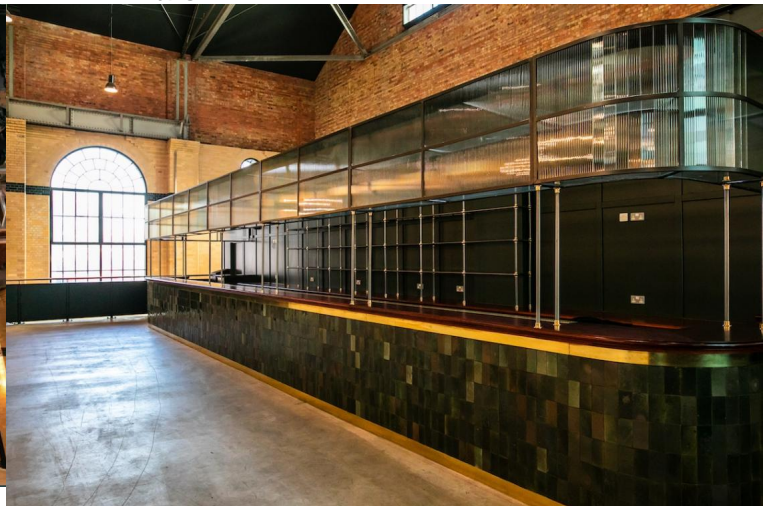
04667-024.jpg



04667-023.jpg



04667-009.jpg

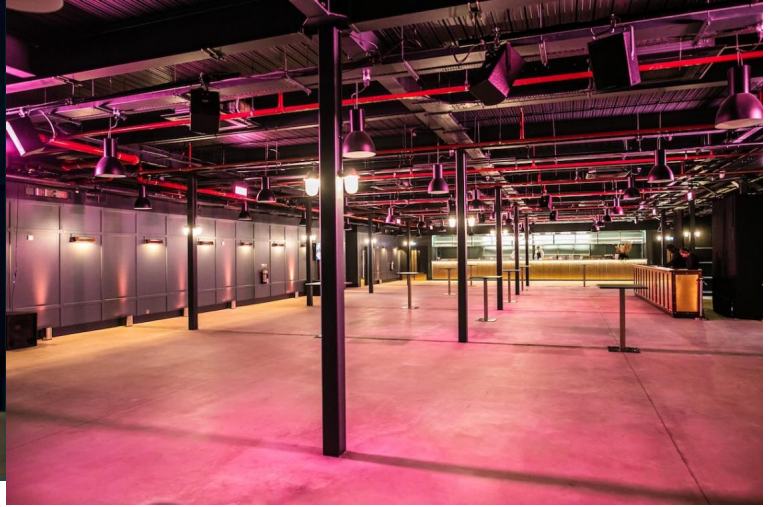


04667-022.jpg

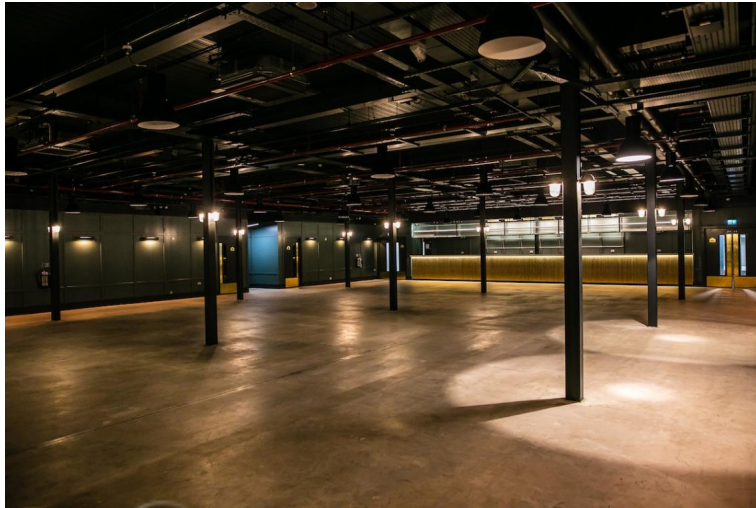




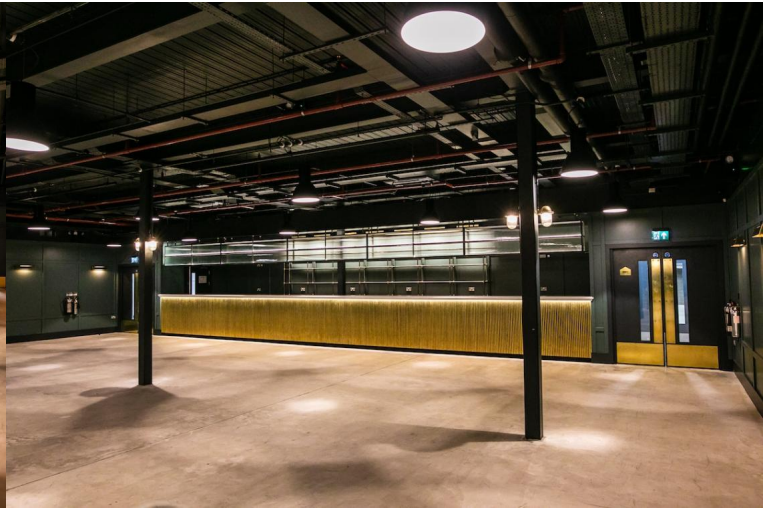
04667-008.jpg



04667-021.jpg



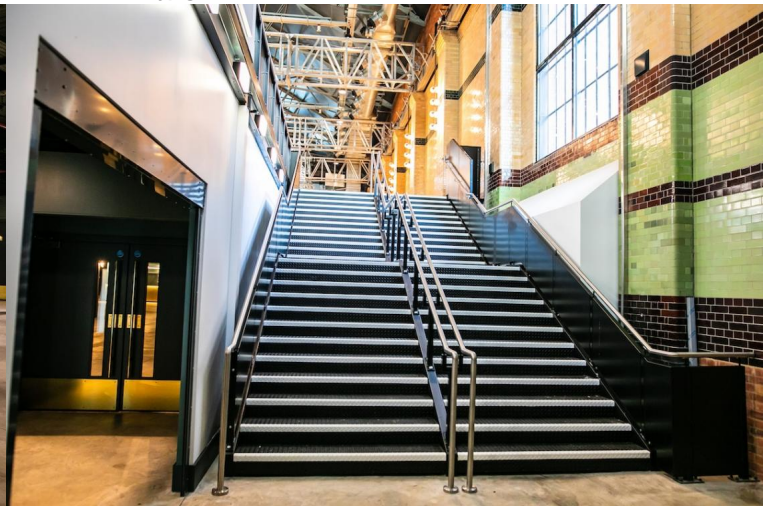
04667-020.jpg



04667-019.jpg

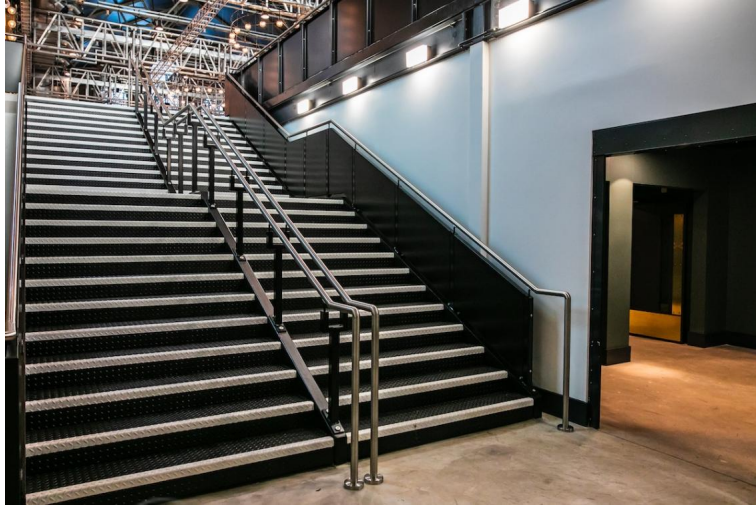


04667-018.jpg



04667-031.jpg





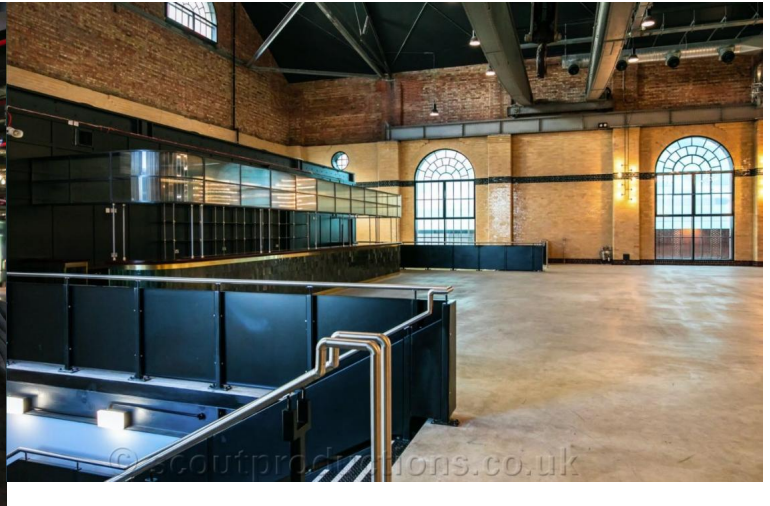
04667-030.jpg



04667-029.jpg



04667-028.jpg



04667-007.jpg