

Location:	02379	Distance from London W1 (miles):	12.80
<p>Great suburban house with interesting angles. Good textures and colours. 90's feel with spacious back garden, garage, and a typical dated look throughout</p>		Parking:	free parking on street MINIMAL PARKING OR PAY NEIGHBOURS FOR DRIVEWAYS
		Access:	good
		Availability:	Small shoot only
		Power:	local
		Noise:	quiet
		Area:	



02379-102.jpg



02379-105.jpg



02379-104.jpg



02379-087.jpg



02379-089.jpg



02379-088.jpg



02379-030.jpg



02379-033.jpg



02379-091.jpg



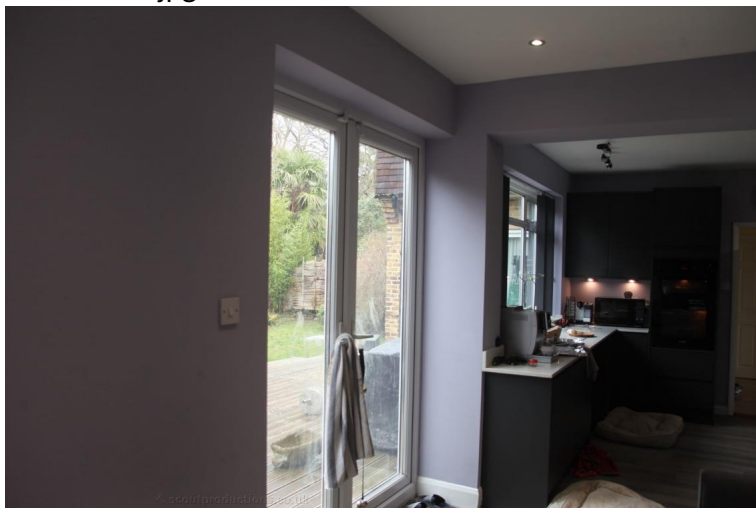
02379-073.jpg



02379-090.jpg



02379-093.jpg



02379-092.jpg



02379-061.jpg



02379-074.jpg



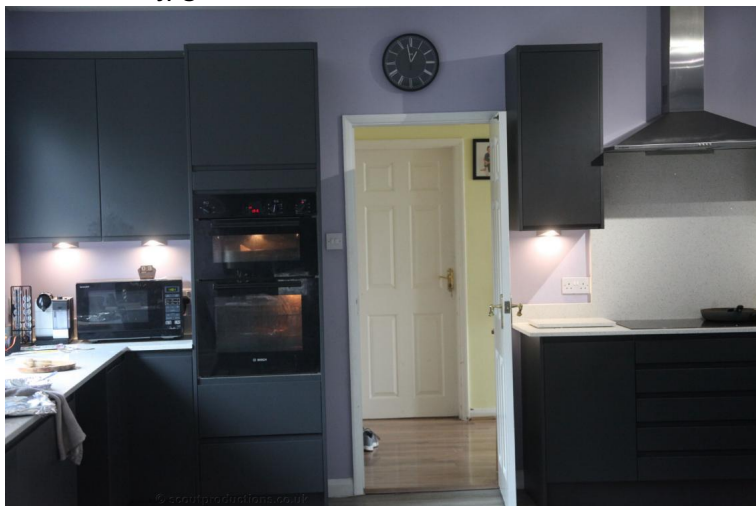
02379-095.jpg



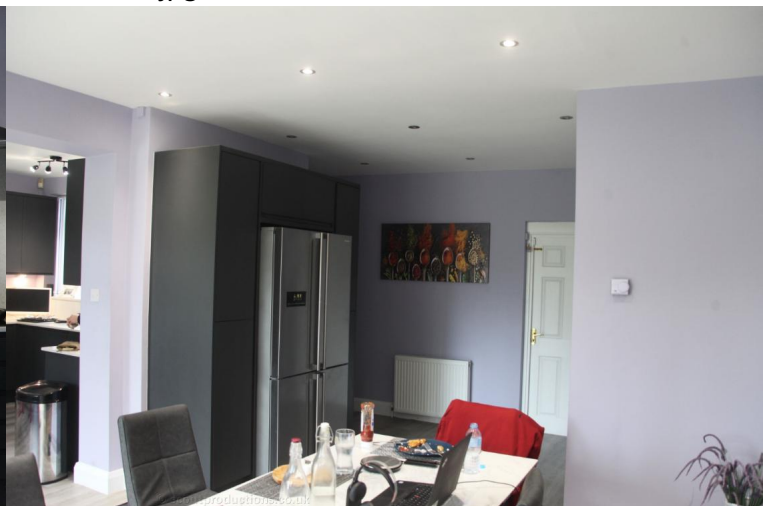
02379-077.jpg



02379-060.jpg



02379-094.jpg



02379-097.jpg



02379-096.jpg



02379-099.jpg



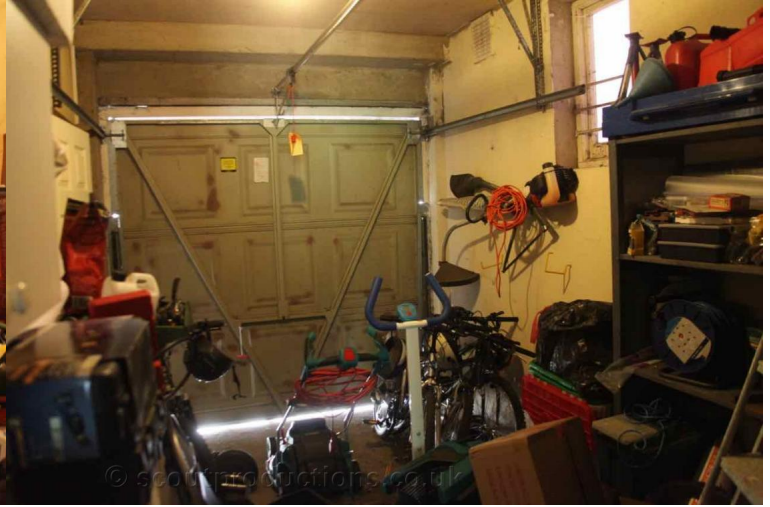
02379-098.jpg



02379-026.jpg



02379-057.jpg



02379-056.jpg



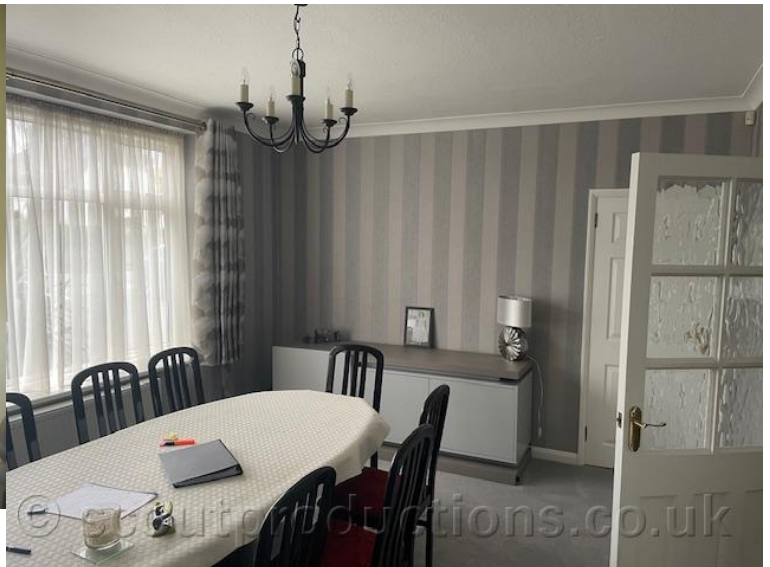
02379-101.jpg



02379-100.jpg



02379-059.jpg



02379-103.jpg