



Location SP00962

Lovely laid out suburban home with open style staircase and great symmetry front of house.

Additional Info

Distance From London W1(miles): 12.93
Parking:
Access:
Availability:
Power:
Noise:

Address

Area: North West London



00962-001.jpg



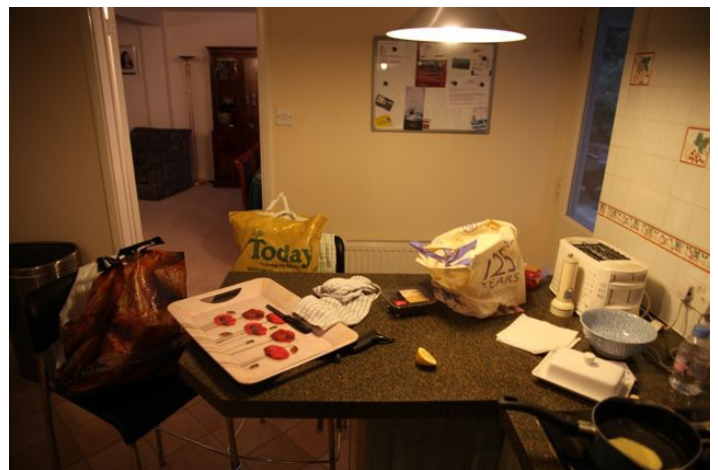
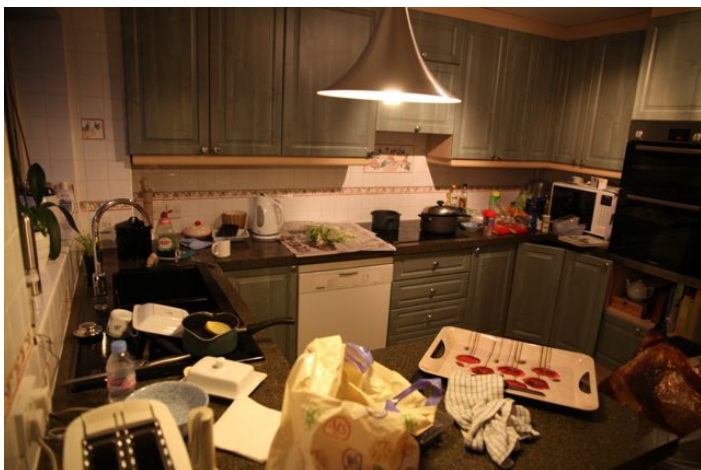
00962-002.jpg



00962-005.jpg



00962-006.jpg



00962-008.jpg



00962-009.jpg



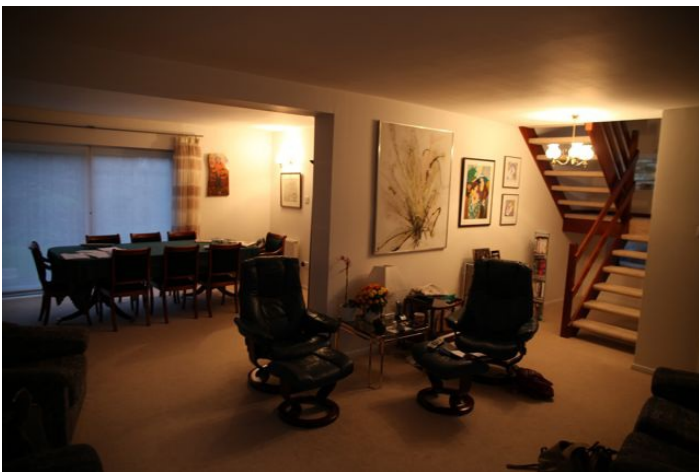
00962-010.jpg



00962-011.jpg



00962-012.jpg



00962-013.jpg



00962-019.jpg



00962-020.jpg





00962-023.jpg